

DIRECTOR'S NOTES

Hosted by the
McGavock High School Band
McGavock High School Stadium
3150 McGavock Pike
Nashville, Tennessee 37214
615.885.8879

Welcome to the 31st Annual Music City Invitational!

Marching season is here again and the McGavock High School Band students, parents, friends and faculty have been making preparations for months to offer you the best contest possible.

This year our trophy list will include:

Mayor's Cup Trophy – Small and Large Division
Band 1st, 2nd, 3rd Place Trophies – Each Classification
Outstanding Metro Band Trophy – Each Classification
Guard 1st, 2nd, Place Trophies – Small and Large Division
Overall Guard Challenge Trophy – Regardless of Division
Field Commander 1st, 2nd Place Trophies – Small and Large Division
Overall Field Commander Challenge Trophy – Regardless of Division
Drum Line 1st, 2nd Place Trophies – Small and Large Division
Overall Drum Line Challenge Trophy – Regardless of Division
Superior Trophies – Bands, Guards and Field Commanders
Participation Awards

We look forward to seeing you October 24th, and want it to be a thoroughly enjoyable day for you, your band, and band boosters.

If you have any questions regarding the contest, or need any assistance in planning your day, please do not hesitate to call me at 615.885.8879 (days), 615.847.9955 (nights), FAX me at 615.889.9282, or EMAIL me at: jbeckman@mcgavockband.com.

Jeff Beckman
Contest Director

AWARDS

Mayor's Cup Trophy

A Mayor's Cup will be awarded to the highest scoring band in Large Division Finals competition (Class AAAA and AAA). An identical Mayor's Cup will be awarded to the highest scoring band in Small Division Finals competition (Class AA and A). These trophies become the possession of the recipient for a period of one school year. The winners of these awards will be asked to sign an agreement stating that they will be financially responsible for any damage or loss of said trophies. A carrying case is provided for transportation of these awards.

At the end of the school year, the trophies are returned to the McGavock High School Band and presented to the next contest winners. Trophies will be presented to the previous winner as a permanent acknowledgment of their accomplishment. Also, each band receiving a Mayor's Cup will have their name engraved on the trophy permanently.

Championship Medallions are available for purchase by the bands receiving the Mayor's Cup Trophies.

Place Trophies

The bands that reflect the three highest scores in all Classes AAAA, AAA, AA, and A in Finals Competition will receive an appropriate trophy. In the event that only two bands within a classification make the Finals the band with the third highest score in Preliminary Competition will receive the Third Place Trophy. However, if a class is expanded due to vacancies occurring within a division, additional Place Trophies may be awarded.

Outstanding Metro Band

Awarded to the highest scoring Metro Band in Preliminary Competition for each classification.

Guard Trophies/Challenge Cup

First and Second Place Trophies will be awarded in each Division to the Guards reflecting the highest and next highest scores in Preliminary Competition. A Challenge Cup will also be awarded to the highest scoring guard, regardless of class. The Challenge Cup will be returned each year and replaced with an appropriate plaque.

Field Commander Trophies/Challenge Cup

First and Second Place Trophies will be awarded in each division to the Field Commanders reflecting the highest scores in Preliminary Competition. A Challenge Cup will also be awarded to the highest scoring Field Commander, regardless of class. The Challenge Cup will be returned each year and replaced with an appropriate plaque.

DIRECTOR'S NOTES

ARRIVAL AND PARKING

Buses and equipment vehicles will be parked adjacent to the marching field. A guide will be provided to give your driver directions to the designated parking area. You will be allotted the exact number of parking spaces as noted on your entrance form. Due to space and pre-planning necessity, NO vehicle will be allowed in the band bus parking area without an M.C.I. parking permit.

A band aide will meet you upon arrival and remain with you throughout the contest. The aide is there to assist you. However, the band director is responsible for his/her band's warm-up and getting to the field on time.

A Maximum of ONE chaperone pass per 10 band students plus bus drivers and ONE Pit pass for every 20 students will be provided. A Maximum of 10 Chaperone Passes and 12 Pit Passes will be allowed. NO EXCEPTIONS! Band managers and members must be in uniform for admittance without a ticket. Additional tickets may be purchased.

If your band plans to change into or out of uniforms during the day, we must be notified in advance so arrangements may be made to stamp students hands for re-entry. Once out of uniform, your band must re-enter as a group.

Miscellaneous Information

RAIN

The contest will not be halted or delayed in the middle of a performance because of rain. If rain starts while you are performing, you must continue. You will not be allowed a make-up performance.

Contest officials reserve the right to delay the contest between performances because of excessive rain. In the event that the contest is delayed due to rain, all directors should report to the school's band room to meet with contest officials for further instructions. Each band will have a designated classroom for students to report to at that time. Your band aide will have this information.

VIDEOTAPING EQUIPMENT WILL BE ALLOWED THIS YEAR

Video and filming equipment will be allowed in the stadium. However, we will provide a free video for each band. Please advise parents and chaperones to film their own band **ONLY**.

STORAGE OF EQUIPMENT

Facilities for equipment storage will not be provided. Each band should store their own equipment on their buses and/or trucks.

FIRST AID, LOST & FOUND, EMERGENCY REPAIR SERVICE, INFORMATION

All will be provided next to the main concession stand.

TELEPHONE

Telephone (Emergency use ONLY) will be available in the school cafeteria.

Drum Line Trophies/Challenge Cup

First and Second Place Trophies will be awarded in each Division to the Drum Lines reflecting the highest and next highest scores in Preliminary Competition. A Challenge Cup will also be awarded to the highest scoring Drum Line, regardless of class. The Challenge Cup will be returned each year and replaced with an appropriate plaque.

Superior Performance Trophies

Bands, Guards and Field Commanders receiving the rating of Superior in Preliminary Competition will receive a Superior Trophy.

Participation Awards

Each Band participating in the Music City Invitational will receive a beautiful Participation Award.

CLASSIFICATIONS

Class AAAA Large Division - 101 or more musicians
Class AAAA Large Division - 72 – 100 musicians
Class AA Small Division - 56 - 71 musicians
Class A Small Division - 55 or fewer musicians

Final Competition

Preliminary and Final Scores will not be averaged. Final scores will determine winners of Mayor's Cup and 1st, 2nd and 3rd Place awards in each classification.

The same rating procedure will be used in the Finals as in the Preliminaries.

Bands may not drop anything on the field during competition to aid in marching drill maneuvers. A 5-point penalty will be assessed for this violation.

All equipment dropped during performance must be retrieved before the end of your 15-minute period. A 5-point penalty will be assessed for violation.

In the event of a tie, the averaged music score will be used to determine the placement.

A Guard judge, Field Commander judge and Drum Line judge, separate from the seven Band judges, will score Guards, Field Commanders and Drum Lines during Preliminaries. Each judge will have 100 points and the scale listed on the previous page will determine ratings.

RATING PROCEDURES

To determine the scores for each performance, seven judges will use the Caption Judging System to score each band from the press box. The panel will consist of music, marching, music effect, visual effect, and overall effect judges. Each band will have a total of one hundred points. The following scale will be used to determine ratings:

	<u>Class AAA/AAAA</u>	<u>Class A/AA</u>
Superior	100 - 80	100 - 75
Excellent	79.9 - 60	74.9-55
Average	59.9 - 40	54.9-35
Poor	39.9 - 20	34.9-15

MCI POINT SYSTEM

Bands

Music Judge may award up to 100 points. 60% of Total Band Score.

Tone Quality – 35 points

Technical Demands – 35 points

Musicality – 30 points

Visual Judge may award up to 100 points. 20% of Total Band Score.

Technical Excellence – 50 points

Form and Accuracy – 50 points

Effect Judge may award up to 100 points. 20% of Total Band Score.

Repertoire – 35 points

Communication – 35 points

Coordination – 30 points

Guard

May receive up to 100 points.

Marching Performance – 40 points

Routine Design – 20 points

General Effect – 30 points

Field Commanders

May receive up to 100 points.

Conducting – 50 points

Marching Performance – 20 points

General Effect – 30 points

Drum Lines

May receive up to 100 points.

Repertoire – 20 points

Showmanship – 15 points

Coordination – 15 points

Musicality – 30 points

Demand/Exposure – 20 points

CONCESSION STANDS

We strongly encourage bands to support our concessions the day of the contest. We are offering special group packages to be delivered to your buses. Information about the packages will be included in your pre-contest information packet. The M.C.I.

Committee has put great effort into providing tasty hamburgers, hot dogs, and other low cost (yet quality) snack foods for our contest guests.

Notice to “AA” and “A” Class Bands – since our dinner break is only 1 hour, we recommend you have your students eat dinner before the end of Preliminaries.

MENU

Deluxe Hamburger

Jumbo Hot Dog

Potato Chips

Popcorn

Candy

Coffee

Hot Chocolate (seasonal)

Cookies

Nachos & Cheese

Pizza (per slice)

Soft drinks to be sold

include Coke, Sprite,
and Diet Coke

2009 M.C.I. SCHEDULE

9:00 A.M.	Preliminary Competition Begins
4:50 P.M.	Announcement of Finalists
5:10 P.M.	Dinner Break
6:15 P.M.	Exhibition Performance by Music City Legend Drum Corps
6:30 P.M.	Finals Competition Begins
9:45 P.M.	Exhibition Performance by McGavock High School Band
10:00 P.M.	Exhibition Performance by Western Kentucky University
10:15 P.M.	Awards Ceremony

WARM-UP PERIOD

There will be two warm-up areas provided. The warm-up period for your band includes:

3 minutes to enter area

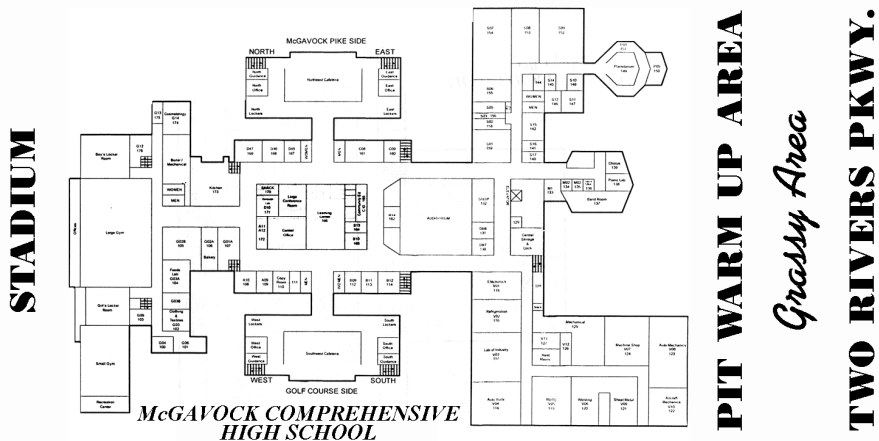
20 minutes to warm up

2 minutes to exit area

Two contest officials will strictly enforce the schedule. Any violation of this warm-up schedule will result in a 5-point penalty.

PIT/FRONT ENSEMBLE WARMUP INFORMATION

Due to an increased interest in a pit/front ensemble warm-up area, we have designated an area where groups may enter and leave without a time schedule. We ask that each group play **ONLY** keyboard/mallet (bells, marimba, xylophone, vibes, etc.) instruments in this area and set up so that the building will separate you and the stadium. It is requested that you limit your time in this area to thirty minutes. New this year: the front ensemble has the option of warming up with their band. If they choose to do this, they must stay up in the corridor area to block the sound.



REPORT TO FIELD

You will be allowed 17 minutes travel time to the starting gate. The Starter Official will notify the director at the gate 4 minutes prior to performance time to enter the field. Equipment and flag placement will be made on the field only during your 4 minutes set-up time.

DIRECTOR'S DINNER

There will be a free dinner at the *Two Rivers Mansion* provided for all Principals, Directors, Assistant Directors, and their spouses during the dinner break.

AWARDS CEREMONY

At approximately 10:15 p.m., Field Commanders and Guard Captains will be asked to report to the front hash mark on the field. All bands must remain in designated seating for the Awards Ceremony. No band may line up on any part of the field or within the stadium.

Following the presentation of awards there will be no further performance or playing of instruments due to the late hour and out of consideration for McGavock High School's neighbors.

FINALS TAPES AND CRITIQUES

PLEASE NOTE:

In order to protect the integrity of the contest, Directors will not be allowed to pick up sheets and tapes before the Awards Ceremony. Directors may pick up sheets and tapes following the Awards Ceremony at the Awards Table on the 50-yard line.

M.C.I. MEMORABILIA

T-Shirts, programs, and other M.C.I. memorabilia will be on sale in the concession area and in the bus parking area.

ANNOUNCEMENT OF PERFORMANCE

At the end of the 4 minutes, ready or not you will be announced on the public address system. The announcer will say, "Field Commander _____, is your band ready?" Your Field Commander should acknowledge with a salute. Upon receiving the salute, the announcer will say, "You may take the field of competition." Do not start your performance until then.

Time restriction is 6 minutes (minimum) and 10 minutes (maximum). The official performance time will begin 10 seconds after you are told, "You may take the field of competition." Timing will cease upon the halting of movement and sound so, in actuality; you may have a maximum of 10 minutes, 10 seconds.

We recommend that you set-up in 2 minutes or less and allot 2 minutes to exit the field. However, you may distribute the time as you desire, as long as the total of set-up, performance and exit does not exceed the time allowed for each band: 14 minutes for bands in class A/AA and 15 minutes for bands in Class AAA/AAAA.

EXIT FIELD AFTER PERFORMANCE

The band will exit at the end of the field opposite the starting gate. You may use drum cadence for one minute to exit. The cadence must stop after one minute, even if you are not off of the field.

Official contest time will be announced periodically from the press box. The penalty for going over the time limit or performing less than the minimum is a deduction of 5 points from the score of your band.

If a band is late for their performance time because of a mechanical failure of a bus or a traffic accident, the Contest Director will make every attempt to allow the band to perform. However, due to the time constraints of the contest, you cannot be guaranteed a performance time.

BAND SEATING

A limited amount of band seating area will be available due to the installation of a new track. We will make every attempt to provide seating for all bands with the exception of those in the "AAAA" classification. An area will be provided for those bands during the announcement of finalists.

Seating will be made available for those bands not in finals that wish to remain and observe the finals competition. You are encouraged to stay for the finals competition and the awards ceremony.

ADMISSION

The price of admission will be:

- \$ 9.00 - Preliminary Competition Only
- \$ 10.00 - Finals Competition Only
- \$ 15.00 - BOTH EVENTS

DRESSING FACILITIES

Individual rooms will be provided for all bands to use as dressing facilities, if they desire. Please notify us in advance if you desire dressing facilities.

If your band plans to change into or out of uniforms during the day, we must be notified in advance so that arrangements may be made for band aides to stamp student's hands for re-entry. Once out of uniform, your band must re-enter as a group.

VIP SEATING

There will be seats in front of the press box for directors, director's spouses, and special guests. A Special VIP Badge will be required for access to the VIP area.

ANNOUNCEMENT OF FINALISTS

Following Preliminaries, all band directors and assistant directors will report to the fifty-yard line to be introduced and presented a Participation Award. Bands to appear in the Finals Competition will be announced at this time. Finalists will be announced in the order they performed in the Preliminaries. The top two highest scoring bands in each classification and the next four highest scoring bands from any classification will appear in the Finals. (However, if a class is totally eliminated due to vacancies, the remaining class in that Division will be expanded in the Finals to include the four highest scoring bands from Preliminary Competition).

The twelve directors whose bands are in the Finals will then report to the sideline for a drawing to determine order of performance in Finals Competition. Small Division Bands will perform in the order determined by the draw, followed by the Large Division Bands.

The directors of the Finalist Bands should pick-up their judges' tapes from preliminaries at the front sideline immediately following the drawing.